

CONCEPT: *Going With the Flow*

This design converts an open stretch of monocultural turfgrass with a stormwater runoff issue into an inviting, visually dynamic community amenity that artfully manages stormwater while helping to restore an ecological connection to the adjoining stream valley park. Flow is achieved not only from creative water management, but is also found in the braids of colorful native perennials and grasses woven into the central waterway feature, from the placement of trees that lead the eye through the space, and by the easy conveyance of visitors through the landscape. Views are maximized at key locations to enhance visitor experience.

Wetland Watch

A lower seating area tucked into the slope offers contemplative views of the nearby wetland.

Color Guard

Color abounds in spring and fall courtesy of a selection of native hardwood canopy and understory trees. Copses of small flowering trees welcome spring with subtle beauty, while all trees become a cacophony of color throughout the space as autumn takes the stage.

Water Wise Waterway

The central feature, a rock and cobble lined waterway, becomes a watershed tributary during storm events. Water is directed into a long meander, using a series of rock check dams and artfully arranged boulders to dissipate velocity. Water-loving native plants buffer the edges and help minimize erosion by slowing down and absorbing excess water.

Buena Vista

This vantage point lends true meaning to the street name by providing a sweeping vista of the landscape.

The Meander

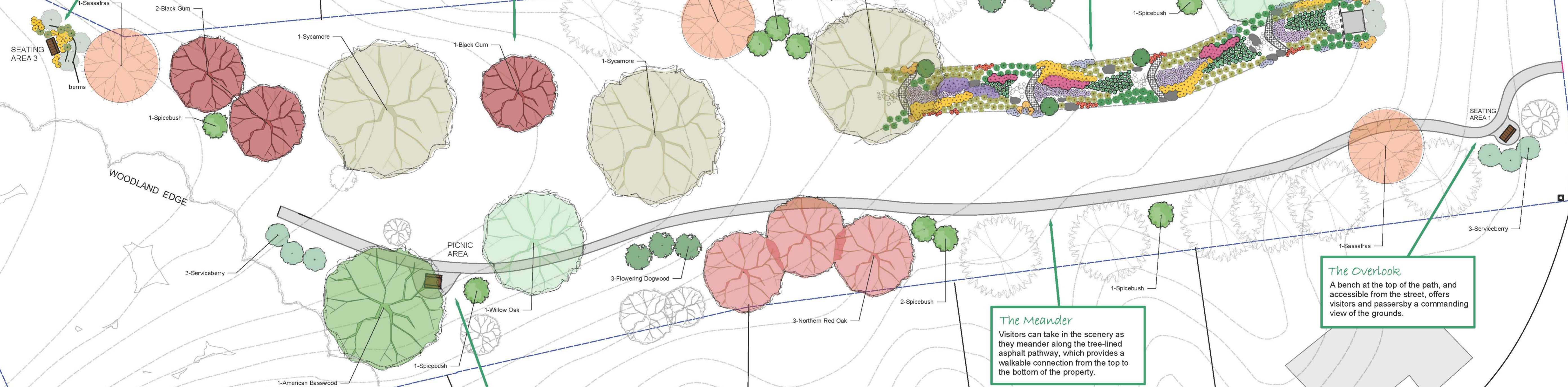
Visitors can take in the scenery as they meander along the tree-lined asphalt pathway, which provides a walkable connection from the top to the bottom of the property.

The Overlook

A bench at the top of the path, and accessible from the street, offers visitors and passersby a commanding view of the grounds.

Shady Retreat

A shady path-side nook offers a quiet spot to picnic and relax.



DESIGNED BY Darlene Robbins			TITLE DERWOOD STATION #2 HOMEOWNERS ASSOCIATION BUENA VISTA DRIVE GAITHERSBURG, MD	
DRAWN BY Darlene Robbins				
DATE OCTOBER 23, 2015	DRAWING NAME CONCEPT PLAN--COMMON AREA			
APPROVED BY	SCALE 1" = 20'		SHEET 1 OF 1	
OTHER APPROVALS	REV			
ELECTRONIC FILE NAME				